



# FALL OPENING SCHOOL PLAN 2021-2022 School Year\*



@SEQUHSD

[WWW.SEQ.ORG](http://WWW.SEQ.ORG)

# MESSAGE FROM THE SUPERINTENDENT



Dear Sequoia Union High School District Family:

It is with great enthusiasm that I share with you our plans to resume full in-person instruction for all of our students.

From the very beginning of the pandemic, our team has been hard at work developing strategies that would allow for an eventual return to in-person instruction for all of our students. From working closely with state and local health officials to implementing the most up-to-date practices for classroom safety, our team has taken all of the necessary steps to create a safe and healthy environment for our students.

I recognize that last year was a very difficult year for our parent community, and I want you to know that our district is committed to be your partner as we prepare for our return. By working together, I am certain that we can create a safe and fun environment where our students will be able to thrive in our classrooms.

Although this plan outlines the measures that the District will implement for the school year, to me it is more than a plan. It is the beginning of a new reality within our district that will allow us the opportunity to confidently step towards the optimism of a bright future.

On behalf of the Sequoia Union High School District, thank you for your partnership, and for making our district one of the best in California.

Sincerely,

Dr. Darnise R. Williams  
Superintendent



# TABLE OF CONTENTS

**WELCOME BACK, SUHSD! ..... 3**

**A DAY ON CAMPUS ..... 4**

**OUR COMMITMENT TO SAFETY ..... 5**

**STAYING SAFE ..... 9**

# WELCOME BACK, SUHSD!

## We are excited to back together for in-person learning.

Sequoia Union High School District will offer full day in-person instructional programming to all students, five days a week with full (pre-covid) instructional minutes, on all its campuses. School-specific site plans will be shared by your principal before school begins.

## THE FIRST DAY OF SCHOOL IS AUGUST 11, 2021

---

This plan was developed in compliance with state and local guidelines.



Health officials continue to learn about COVID-19, its variants, and the efficacy of vaccines on various populations.

As with the California Department of Public Health and San Mateo Public Health Department, our District will continue to reassess and reevaluate our protocols and mandates as the school year continues.

As more information is gathered, SUHSD will continue to update its plan and keep staff and parents informed.



# A DAY ON CAMPUS



## TRANSPORTATION

SUHSD has adopted student transportation bus procedures to ensure the health and safety of students and staff that include but are not limited to:

- Social Distancing
- Seating Assignments
- Health Screening
- Masks/Face Covering

For a full description of our transportation procedures, [click here](#).



## TECHNOLOGY

*Computer Labs/Chromebook Carts*

- Students who need to check out a Chromebook and/or Hot Spot can submit their request via the [Computer/Internet Access Request Form](#).

*Learning Management System*

- Students can find assignments, announcements, and grades in [Canvas](#).
- The district automatically sets up parent accounts.



## FOOD SERVICES

All students districtwide will receive free meals for the 2021-22 school year.

- Students may take one free grab and go breakfast meal and one free lunch meal per school day.

SUHSD will implement the following health and safety procedures:

- Students will wear masks while waiting in line for meals and maximize physical distance as much as possible while eating (especially indoors).
- Hand hygiene before and after meals will be encouraged.
- Frequently touched surfaces will be cleaned and sanitized before and after meal service periods.



## ATHLETICS

SUHSD Athletics will begin as normally scheduled and follow the Health & Safety measures previously outlined (i.e. masks are required indoors for all people, but are optional outdoors in K-12 school settings).

- The Central Coast Section (CCS) and California Interscholastic Federation (CIF) expect updated Youth Sports guidance from the California Department of Public Health (CDPH) prior to the start of the school year.

# OUR COMMITMENT TO SAFETY

As we welcome our students and staff back to our schools for the 2021-2022 school year, health and safety are our top priorities. As a result, the following measures and protocols have been implemented to ensure the safety of our students and staff.

## MASKS/FACE COVERINGS



SUSHD will follow the California Department of Public Health K-12 Schools Reopening Framework and Guidance (CDPH Framework), directives and guidance from the San Mateo County Public Health Department (SMCPHD), and San Mateo County Coalition for Safe Schools and Communities Pandemic Recovery Framework.

**We are adopting the following practices for the use of masks/face coverings:**

- K-12 students must wear masks **indoors** unless they are exempted.
- Adults in K-12 school settings are also required to mask indoors.
- Masks are **optional outdoors** for all in K-12 school settings, including during activities and sports.
- **Students that do not wear masks will be provided a mask and education opportunity that is aligned with restorative justice practices before being referred to the Independent Study Program.**

**Exemptions include but are not limited to:**

- Persons younger than two years old
- Persons with a medical condition or mental health condition
- Persons with a disability that prevents wearing a mask
- Persons who are hearing impaired or communicating with a person who is hearing impaired, where the ability to see the mouth is essential for communication
- Persons for whom wearing a mask would create a risk to the person related to their work as determined by local, state, or federal regulators or workplace safety guidelines.

# OUR COMMITMENT TO SAFETY

## Handwashing and Respiratory Etiquette



SUHSD is reinforcing the importance of regular handwashing and respiratory etiquette.

- Staff, students and visitors will practice handwashing and respiratory etiquette (covering coughs and sneezes) to keep from getting and spreading infectious illnesses, including COVID-19.
- SUHSD will monitor and reinforce these behaviors and provide adequate handwashing supplies.
- SUHSD will continue to promote handwashing and provide adequate supplies for COVID-19 prevention.

## Healthy Facilities and Improving Ventilation

### Healthy Facilities

The custodial staff will ensure that restrooms are clean and sanitized throughout the day, as well as other high touch areas as frequently as possible, as listed below:

- Offices
- Door handle
- Entrances
- Hallways
- Stairwells
- Classrooms
- No-touch water bottle filling stations



SUHSD is using EPA approved products that are designed to combat COVID-19 to clean and sanitize classrooms and surfaces.

### Ventilation

Maintenance and Operation staff have completed an audit for the HVAC system district-wide. The district has increased fresh outside air ventilation during COVID-19 to the recommended levels of 30 percent from the Centers for Disease Controls and ASHRAE.



Other room units have had modifications, such as a larger outside air duct installed to achieve the higher air change requirements. Proper air changes during occupancy have been implemented during lunch and passing periods.

# OUR COMMITMENT TO SAFETY

## Health Checks / Screening



All students, staff, and visitors are required to screen themselves for COVID-19 symptoms and/or potential exposure daily before entering any SUHSD school campus or facility.

Although the daily health screening will not be submitted to your school or district, people should remain offsite and notify the appropriate school staff member of their absence reason when any of the following are true:

***In the last 5 days***, person has:

- ☐ Tested Positive for COVID-19.
- ☐ Been a close contact to someone who has recently tested positive for COVID-19 (within 6 ft of the individual for at least 15 minutes or been coughed or sneezed on).
- ☐ Been a close contact to someone feeling symptoms of COVID-19 (within 6 feet of the individual for at least 15 minutes or been coughed or sneezed on).
- ☐ Been identified by a healthcare provider, public health department, or contact tracer as someone who should get tested.

***In the last 24 hours***, person has experienced any of the following symptoms:

- ☐ Fever or feeling feverish (chills, sweating)
- ☐ Cough that's new or worsening (continuous, more than usual)
- ☐ Shortness of breath (out of breath or unable to breathe deeply)
- ☐ Sore throat (not related to seasonal allergies or other known causes/conditions)
- ☐ New headache that is unusual or long-lasting (not related to migraines or recurring headaches)
- ☐ Unexplained muscle or body aches
- ☐ Nausea, vomiting or diarrhea
- ☐ New loss of taste or smell

**SUHSD will host FREE  
vaccination clinics  
throughout the  
school year.**



# OUR COMMITMENT TO SAFETY

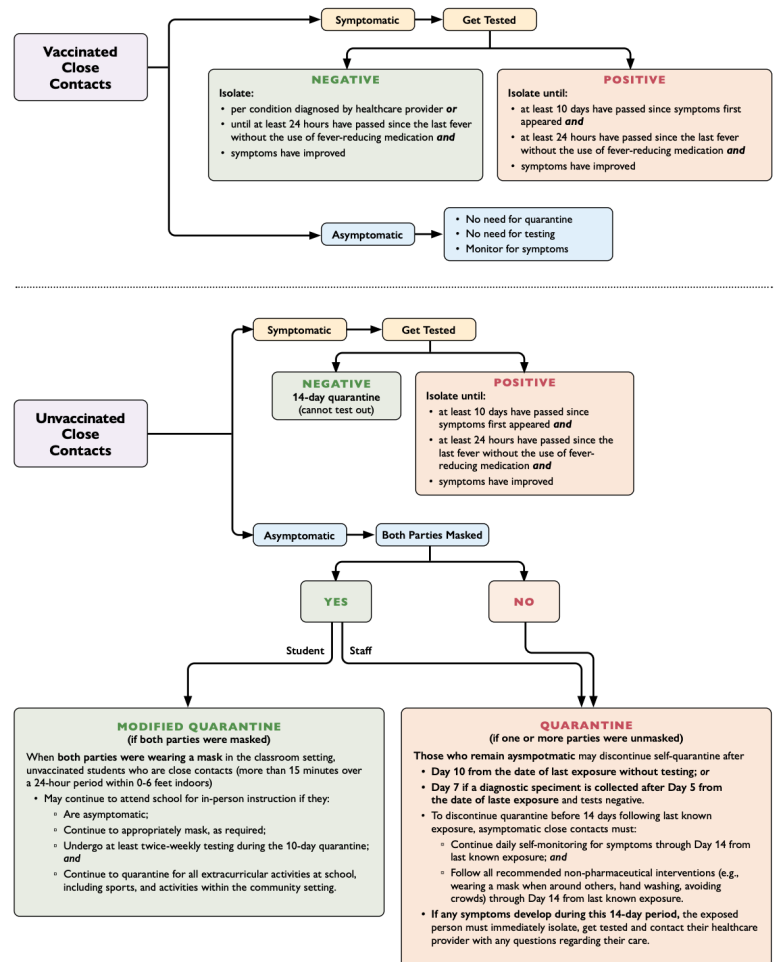
## Contact Tracing Procedures

The District will continue to work with SMCPHD on contact tracing and to receive isolation/quarantine direction for employees and students with COVID-19 or who have been exposed (close contact) to COVID-19.

*\*Note: a close contact is defined as someone who was within six feet for a total of 15 minutes or more within 2 days prior to illness onset, regardless of whether the contact was wearing a mask.*

The District will continue to collaborate with state and local health departments, to the extent allowable by privacy laws and other applicable laws, to confidentially provide information about people diagnosed with or exposed to COVID-19.

### COVID-19 Exposure at School (CDPH)



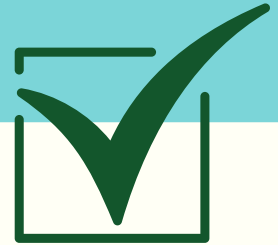
## Post Exposure Testing and Screening

SUHSD offers post-exposure testing for staff and students who may have been exposed to COVID-19 or are identified as close contacts to a positive case in the school setting; staff and students will also be referred to their healthcare provider.

Local community resources are available for COVID-19 screening tests.

For any questions, please contact the Health and Wellness Coordinator Javier Gutierrez at [jgutierrez@seq.org](mailto:jgutierrez@seq.org).

# STAYING SAFE



## BACK TO SCHOOL CHECKLIST

You can make sure everyone is prepared and ready for the start of school by following the recommendations below:

- ☐ Check the SUHSD website for the latest information.
- ☐ Make sure your student has a clean face mask to bring to campus every day.
- ☐ All students, staff, and visitors are required to screen themselves for COVID-19 symptoms and/or potential exposure daily before entering any SUHSD school campus or facility.
- ☐ Masks are required indoors at all times by all students and staff.
- ☐ Enroll in and update your contact information in Infinite Campus.
- ☐ Practice healthy routines for returning to school, such as getting ready on time, eating at regular times, and getting a good night's sleep.
- ☐ Become familiar with the resources available to SUHSD families.

**Student and Family Wellness:** To access SUHSD's list of mental health services and parent resources, please visit our SUHSD Wellness webpage or our [COVID-19 Community Resources webpage](#).

**Parent Portal:** Infinite Campus (IC) is a web-based student information system that stores student data. It provides students and parents the ability to access academic information such as student schedules, attendance, and grades.

**Student Learning Resources:** All students will have unlimited access to [Paper](#), a 24/7 online chat-based tutoring program for expert learning support in any subject area.

# WELCOME BACK



For more information, visit [www.seq.org](http://www.seq.org)



@SEQUHSD